

Name:

IT Applications Unit 3 Self-test Chapter 3

Multiple Choice

Identify the choice that best completes the statement or answers the question.

- 1. What is one advantage of having an online form for data collecting?
 - a. Having to rely on the postal system
 - b. Having to tell people of your address
 - c. Overcoming terrible handwriting
 - d. Overcoming the need to purchase notepads
- 2. Why are different time zones no longer a problem when purchasing goods online?
 - a. The Internet can let us purchase goods 24 hours a day
 - b. Users have credit cards
 - c. They are better quality
 - d. People work 24 hours a day in department stores
- 3. Why do organisations seek feedback from customers?
 - a. Because they are entitled to
 - b. Because they want more information about reactions to their products or services
 - c. Because they want to reward their customers
 - d. Because they want to know their competitors motives
- 4. Online voting can be used to:
 - a. implement a solution.
 - b. develop a program.
 - c. express a solution.
 - d. express an opinion.
- 5. What is a cookie?
 - a. A way of communicating with other users
 - b. A delicious biscuit
 - c. A large executable application
 - d. A small file that a web server stores on the user's computer
- 6. What does HTTPS stand for?
 - a. hypertext transfer protocol spyware
 - b. hypertext transfer protocol secure
 - c. hypertext transfer protocol socket
 - d. hypertext transfer protocol server
- 7. A simple database containing all the data in a single table is called a:
 - a. chart.
 - b. module file.
 - c. flat file database.
 - d. relational database.
- 8. A set of data related to one entity in a database is known as a:
 - a. file.
 - b. field.
 - c. record.
 - d. column.
- 9. In a database table each _____ corresponds to a field and each _____ is a record.
 - a. query, row
 - b. column, row
 - c. row, column
 - d. column, form
- 10. The _____ is a field used as a unique identifier for each record.
 - a. row
 - b. query
 - c. module
 - d. primary key
- 11. What are files with multiple tables that have one or more linked fields called?
 - a. pivot tables
 - b. worksheets
 - c. multi-field databases
 - d. relational databases
- 12. What is the connection between fields in different tables called?
 - a. The join
 - b. A relationship
 - c. Documentation
 - d. The point of origin
- 13. A data structure _____ is used to show the structure of fields, whereas a data structure _____ shows how tables are linked.
 - a. table, plan
 - b. plan, chart
 - c. diagram, table
 - d. table, diagram
- 14. Data is filtered using a:
 - a. form.
 - b. query.
 - c. macro.
 - d. report.
- 15. Which of the query criteria below would show a list of only those people whose name ends with 'Smith' (e.g. Goldsmith)?
 - a. *smith
 - b. smith*
 - c. ?smith

- d. s??th
- 16. A _____ can automate a series of tasks in a database.
 - a. field
 - b. macro
 - c. record
 - d. primary key
- 17. Layout diagrams are typical planning tools used for _____ and _____.
 - a. forms, reports
 - b. tables, queries
 - c. macros, forms
 - d. forms, queries
- 18. Creating a _____ during the design stage allows us to establish which functions and formulas are working in the development stage.
 - a. database
 - b. test plan
 - c. layout diagram
 - d. list of staff available
- 19. Methods of database validation include:
 - a. list boxes.
 - b. IIF statements.
 - c. table validation rules.
 - d. all of the above.
- 20. Which element of a database is used for input?
 - a. form
 - b. table
 - c. query
 - d. report

Question 21; (2/2012)

The best electronic validation technique for ensuring that an online data entry form is complete is

- A. a data type check.
- B. a data range check.
- C. a required field check.
- D. graphic image recognition (CAPTCHA).

Question 22; (4/2012)

The best design tool to show the structure of a database solution is

- A. a site map.
- B. a mock-up of the input form.
- C. an entity-relationship (ER) diagram.
- D. an input-process-output (IPO) chart.

Question 23; (5/2012)

A relational database management system (RDBMS) developer is creating a new table within a database. The most efficient name and data type for a field containing phone numbers, such as (03) 456 5667, is

- A. name: cpn, data type: number
- B. name: custPn#, data type: text
- C. name: custPhNum, data type: text
- D. name: customer phone number, data type: number

Question 24; (6/2012)

A farmer has hired you to develop a new stock management solution. During development, to ensure that the new solution does what it is intended to do, you should

- A. enter a lot of data to make sure the stock numbers are correct.
- B. read the quick start guide to make sure it is logical and efficient.
- C. create a set of evaluation criteria to judge if the requirements were met.
- D. check the system in three to six months to make sure it is working as intended.

Question 25; (10/2012)

Drivers are insured for mountain track driving if they pass a special driving course (SDC), have a car with roll bars (RB) and are without any convictions (C) for dangerous driving. The design for a query to identify drivers who can receive insurance is

- A. Insured = SDC or RB and C
- B. Insured = SDC and RB and C
- C. Insured = SDC or RB and not C
- D. Insured = SDC and RB and not C

Question 26; (14/2012)

The database table below shows the most popular songs during the decade 2000 to 2010, as voted by an online music community in 2011.

SongID	SongTitle	Artist	Year
1	Halo	Beyoncé	2009
2	Yeah!	Usher	2004
3	Low	Flo Rida	2008
4	How You Remind Me	Nickelback	2001
5	I Gotta Feeling	The Black Eyed Peas	2009
6	No One	Alicia Keys	2007
7	Boom Boom Pow	The Black Eyed Peas	2009
8	Gold Digger	Kanye West	2005
9	Apologize	Timbaland	2007

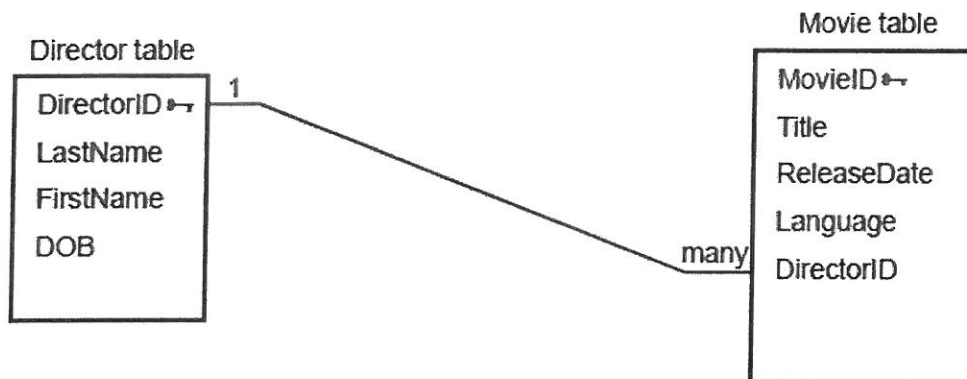
The query `Artist = The Black Eyed Peas OR Year < 2009` will display records

The query `Artist = The Black Eyed Peas OR Year < 2009` will display records

- A. 5, 7
- B. 1, 5, 7
- C. 2, 3, 4, 6, 8, 9
- D. 2, 3, 4, 5, 6, 7, 8, 9

Question 27; (12/2013)

The local cinema holds a monthly mini-festival, where the owner chooses a famous director and screens a selection of their movies. To assist with matching directors and movies, the owner has decided to create a relational database management system (RDBMS) based on the following tables.



The primary key in the Movie table ensures that

- A. a movie has a unique identity.
- B. a director has a unique identity.
- C. two directors cannot have the same LastName.
- D. a director cannot be credited with the wrong movie.

Question 28; (13/2013)

The relationship the owner has created between the primary key in the Director table and the foreign key in the Movie table is needed if fans using the website want to

- A. sort the movies in order of release date.
- B. search for all directors born in the 20th century.
- C. sort the directors' last names in alphabetical order.
- D. search for movies in a particular language by a director.

Question 29; (15/2013)

New employees use photocopy **USER IDENTITIES** from 999 to 1999.

Test data to display an 'INVALID USER IDENTITY' message would be

- A. 998 and 2000
- B. 1000 and 1998
- C. 999 and 1999
- D. 999 and 1998

Question 30; (16/2014)

Which one of the following data sets would best test the sort function of listing suburbs in ascending order?

- A. Barnley, Burnley, Barnley
- B. Ashburton, Burnley, Carlton
- C. Burnley, Carlton, Ashburton
- D. CARLTON, Carlton, CARLTON

